



Info "The Seven Fountains"



Guarantee of sustainability

When it comes to paper, our attitude is inflexible and Cyclus is the result of our commitment. It is top quality ecological paper, made 100% of recycled fiber. Cyclus is amply certified: Blue Angel eco-label, the EU ecological label ISO 14001, and EMAS.



INDEX

Intro Project “The Seven Fountains”page 4

Background: Proyecto Integra page 6

Project “The Seven Fountains”page 8

Specific approachpage 10

Programme “The University of Consciousness” page 12

Philosophy of actionpage 13

Project for crops page 14

Management of the natural and cultural patrimonypage 16

Management of energypage 16

Comprehensive water management page 17

Solid waste managementpage 17

Bioclimatic buildingspage 18

Planned constructionspage 20

Blueprintspage 22

Intro Project

“The Seven Fountains”



A daring and ambitious project for the integral health of people.

Phi Foundation's Project “The Seven Fountains” is probably one of the most innovating propositions which Europe could currently envisage, particularly as the evolution of social and political events confirm, day after day, the need for approaches which combine the reference and integration values considered here.

Phi Foundation is an organization which works towards harmony and balance of body-mind-spirit-environment for the integral development of the human being. The Philosophy and Governing Principles which inspire the Foundation permeate each and every action it takes. On this basis, Phi Foundation has given shape to Proyecto Integra which gathers together, articulates and organizes all the structures and resources which the founders of the Phi Foundation have promoted throughout their personal life experience. This singular operational concept guarantees a harmonious balance between the enterprises involved and the projects it embarks on, ensuring the total coherence of its activities.

“The Seven Fountains” Project seeks to accommodate and harbor the material embodiment of Proyecto Integra on rural land which the foundation owns in the province of Cáceres, between the locations of Hoyos and Acebo, in the west of Spain. The achievement of the project will make it absolutely patent that if only one virtue of the project were to be stressed, that would be harmony.

Indeed, the project requires the construction of different buildings and facilities and as it progresses, a strong emphasis must be placed on the core aspect of prioritizing a minimum environmental impact on the one hand, and harmony of construction with the natural surroundings on the other hand. To achieve this, the project will be developed by Phi Design, an architects' studio participated by Phi Foundation, which counts on the cooperation of the ABIO-UPM research group of Madrid Polytechnic University. The latter consists of some forty professionals from different fields of interest - ranging from landscape gardening to architecture and city-planning - who are leaders and experts in sustainable and bioclimatic buildings. The construction will therefore be directed towards harmony with the surroundings, and respect for its pre-existing reality.

“The Seven Fountains” Project also counts on the experience and knowledge of another contributor, with whom an agreement has been signed to that effect. We refer to the Environmental Foundation (*Fundació Mediambiental*), a non-profit making organization specialized in the recovery and management of areas of manifest ecological importance or with a high environmental value and all activities directed at the conservation of endangered flora and fauna and a degraded landscape.





Energy savings and efficiency ensure a non-aggressive implantation and attentive execution, without foregoing the contribution to be made by high technology.

Special care will be taken to protect and upgrade the pre-existing patrimony, both in respect of the local flora and fauna and of the old constructions, the latter currently in frank decay. Work would therefore seek to harmonize past and present with a view to constructing a future which is respectful of history and of the surroundings. It is a project to build a self-sustainable community which will serve as a flagship of clean, efficient, and unpolluted integration with the land, acting only where essential, and respecting and caring for the natural environment.

In short, the exceptional value of the project is that it will be a material manifestation of the principles and values which inspire Phi Foundation: Principles which allow the human being to take entire responsibility for his acts, which promote solidarity and cooperation among communities, which foment peace and fraternity among humans, and respect for the surroundings they live in.

Another dimension of these values occurs via the companies grouped in *espaciophi*. These companies are engaged in a variety of activities, all of which are in line with the Governing Principles of Phi Foundation.

Phi Gaia, a company created specifically to develop "The Seven Fountains" Project, places its emphasis on the management of clean and efficient energy, waste treatment, conservation of the natural and cultural patrimony and the development of ecological awareness.

Phi Design is an architects' studio engaged in construction research focused on bio-architecture, which makes use of efficient and ecological concepts and materials.

Phi Natural Health consists of a team of professionals who seek the integral health of people, bearing in mind at all times that every individual is part of an indivisible whole, with permanent interaction of body-mind-spirit-surroundings.

The purpose of the "The Seven Fountains" Project is therefore to establish and make known the values of harmony, respect and solidarity, at all levels, in self-sustainable surroundings.

Background: Proyecto Integra



The idea of Proyecto Integra comes from the President and Founder of Phi Foundation as a result of his personal life path. It is a concept which allows us to understand a new philosophy for life in which different realities may co-exist in an integrated mesh:

- Phi Foundation.
- *espaciophi*: the companies participated in by the Foundation (www.espaciophi.com).
- Projects.
- Conferences.
- Courses.
- Seminars.
- Activities.
- Phi Method: An introspective process of self-knowledge.
- Yoga and Meditation.

In this project, Phi Foundation acts as an agglutinating instrument, a platform which finds space for altruism, philanthropy and generosity apart from self-knowledge, personal growth, yoga and meditation.

Phi Foundation is therefore created as a legal solution which acts as a receptacle of the different realities of a dauntless and generous life. It then becomes the ideal framework to receive already existing business projects the focus of which is in line with the foundational purpose. These companies, participated in by the foundation, ***espaciophi***, which were created before the foundation but have similar concerns, are motivated by values beyond the mere intent of financial benefit. They are all companies which share the ideas which current authors call ***business 3.0***, a concept which is explained as follows:

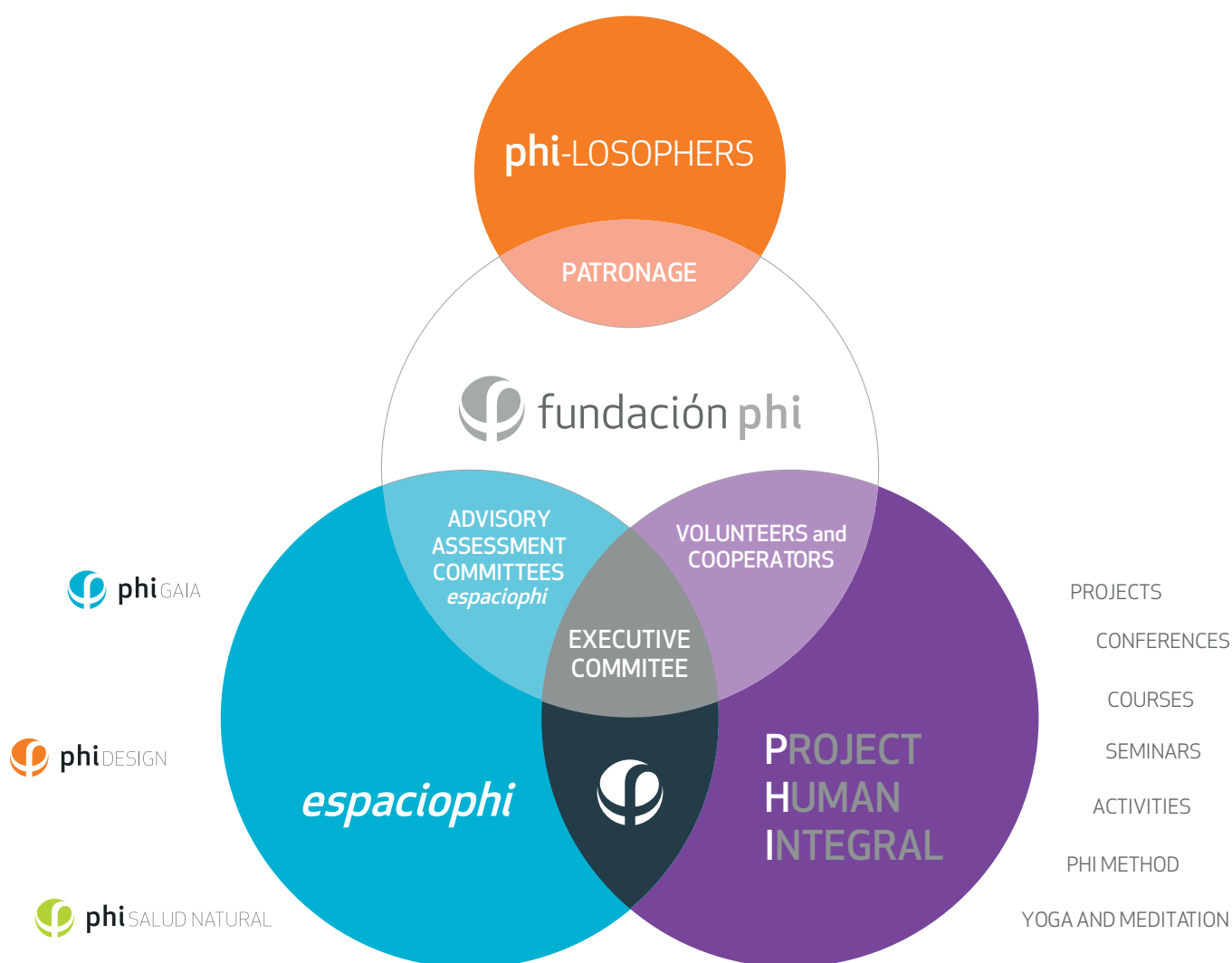
- A business community, a human community which carries sustainability in its DNA and applies it integrally in all its decision-making processes.
- It has the purpose of satisfying the rational needs of products and services for society.
- It aspires to obtain sufficient benefit to be able to continue contributing to social development.
- It seeks licit compensation of capital, work and knowledge (talent), as an integrated unit of thought and action.
- It is profoundly committed to a harmonious development of the planet and mankind.
- It acts from the perspective of full, responsible freedom.
- It contributes to wealth and common good and does not consume, in any aspect, more resources than it generates.
- It operates on the free market in an entirely transparent, ethic and responsible manner.
- It does not engage in speculative activities of any type, not even marginally.
- It shows solidarity and responsible conduct with the environment and with society in general.
- It seeks progress which finds a balance between growth and distribution of wealth.
- As a result of its own activity, it influences and promotes sustainability of the systems it relates to.





CONCEPTUAL DIAGRAM

PROYECTO INTEGRA





Project “The Seven Fountains”

It is probably the most important project which Phi Foundation is working on. It consists in creating a physical space to shelter the explicit form of an expression of Proyecto Integra.

The project is focused on creating a model community which is self-sufficient in respect of energy, food and comprehensive management of water and waste. It stems from a totally bioclimatic, ecological and sustainable concept, based on applying four fundamental principles: reduce-reuse-recycle-recover.

It consists in creating a complex in which to shelter the following functions:

- Phi Foundation headquarters.
- Phi Foundation activities.
- *espaciophi* company activities.
- General activities.
- Areas in which to receive visitors.
- Housing for the staff who attend the entire structure.
- Ecological crop and animal farming.



For a self-sufficient community model.





An area which will moreover protect and develop its natural and cultural patrimony, such as:

- Ruins of old constructions: monastery, typical stone shelters, threshing floors.
- Monumental trees.
- Autochthonous plants and species.
- Autochthonous fauna.

Where pertinent, the information gathered on biodiversity will be sent to the Regional Catalogue of Endangered Species of Extremadura.

In this respect, among other activities, the following are envisaged:

- The creation and management of micro-reserves of autochthonous flora.
- Recovery of oaks, chestnut trees, evergreen oaks and other autochthonous species.
- Management of ecological crops, among which, those which foment the recovery of crops from the past.
- Management of an ecological farm which encourages responsible treatment of animals and their freedom.
- Recovery and upkeep of the old ruins: monastery, typical stone shelters, farmyards, threshing floors, water reserve, etc.

In short, the active promotion of natural surroundings, in an exercise to recover past and valuable lifestyles, in an ecosystem which enjoys the latest of modern technology.

Clean energy, ecological farm and agriculture and environmental protection based on sturdy foundations of culture, nature and environmental consciousness.

Stone shelter in Acebo.



Old farmyards.



Stone shelter in Hoyos.



Ruins of old monastery.

Specific approach



The purpose of the project is to create a self-sustaining community, a centre with minimal environmental impact which will be a landmark to visit; a glimpse at a more sustainable future, better for all. In short, a new way of living which shows greater solidarity with the environment.

It is moreover, an unbeatable way of promoting the Sierra de Gata region, and more specifically, the villages of Hoyos and Acebo.

From the outset it has been possible to count on expertise in all the different fields involved. This is the case of the Environmental Foundation (*Fundació Mediambiental*) which contributes its thoroughness and knowledge to "The Seven Fountains" Project by directly participating in such matters as may be revalued by its experience.

In this respect, the ABIO-UPM research group of Madrid Polytechnic University is also worthy of note. This group participates as advisor in each and every area of the project which relates to architecture and urbanism.

Likewise, the project counts on Mr. Mariano Bueno, a pioneer, great divulgator and expert in Ecological Agriculture, Geo-biology, Bio-construction, and the healthiest life alternatives in Spain and South America. After personally visiting our land, Mr. Bueno offered his experienced vision for execution of the initial project. What is more, he

will make himself available for specific action. The project will also enjoy the participation of the Association of Geo-biological Studies GEA.

To secure the objective described above, creating the necessary infrastructure is envisaged by constructing bioclimatic and self-sufficient buildings in order to:

- House visitors and the persons who will manage the centre and visitors.
- House centres for seminars, workshops and conferences.
- Serve as a dining hall to attend the managers of the centre and visitors. It will be supplied by its own ecological crops and farm produce.
- Serve as a library, medical centre and gymnasium which will meet the intellectual and physical needs of everybody.
- Serve as meditation hall.
- Be a space in which to locate bioclimatic and self-sufficient housing, able to connect to the land's infrastructures.

Likewise, the following is planned:

- Hiking routes and activities to show the area to visitors.
- Routes to show visitors the facilities for energy management, waste and sanitary management, water management and the different types of sustainable buildings and homes.
- Self-guided routes to show the activities and processes of the farm and ecological crops.





All of which related to a tourist complex, an Eco-touristic Estate which will allow generally divulging awareness of the centre, its infrastructure, philosophy of operation and its surroundings, while simultaneously promoting access to the great beauty of the region.

For this purpose, in the different types of buildings use is envisaged of a variety of techniques of bioclimatic architecture and ecological materials, in such a way that the complex will become an international landmark to be able to visit real places which are functioning with this type of construction, using different building techniques.

The project also seeks to create a landmark for the intelligent and sustainable management of waste, water and energy by using a variety of technologies which can be shown to visitors. All of which is intended to attract people from a multiplicity of countries who can assist, with their contribution, not only the economy of the complex, but also to the local and regional economy and development.

In this respect, one of the objectives is to convert the project into a point of tourist information for the whole area, promoting rural and cultural tourism in the region, and encouraging cultural visits to become acquainted with the monumental patrimony of the region. To this end, guided tours will be organized for different tourist routes in the region, using the existing infrastructure of services.

The project will, moreover, include an ecological structure of agricultural and farm production, in an attempt to recover past systems based on multiple crops, farming animals in freedom and the efficient management of land and water via sustainable management of these basic resources. A productive structure conceived and managed with a view to achieving a complex capable of providing for itself.

Complementarily, the project envisages the creation and management of areas for the recovery and protection of local crop varieties.

Programme

“The University of Consciousness”



The University of Consciousness seeks to create a space for tuition and research which allows reflection, analysis of new ideas, dialogue and growth. A space for study and learning in which thinkers, professors, creators of opinion, and personalities of reference in the world of ideas may find a place in which to share their knowledge, interests and concerns and their experience. All of which will fall into the framework defined by the statutes of Phi Foundation which hold, as one of their purposes: “To favour and strengthen the development of human potential and the harmonization of body-mind-spirit-environment of the individual to develop a higher awareness and allow cooperating in the construction of a future replete of harmony and balance for all humans and the planet.”

Courses, conferences, debates and meetings, both present and online, will be organized in matters such as:

- Humanities.
- Alliance of cultures.
- New paradigms.
- Inter-religious and inter-confessional dialogue.
- Holistic health.
- Art and culture.
- Environmental science.
- Renewable energy and waste management.

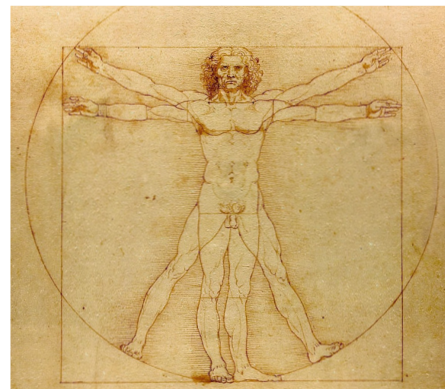
The University of Consciousness must generate a permanent flow of visitors around “The Seven Fountains” which will strengthen the fact of belonging to a community with these interests and concerns. Seven Fountains from which a passion for knowledge and commitment for the environment will flow continuously.

“The Seven Fountains” will be its reference space for continuous contact between members and participants.

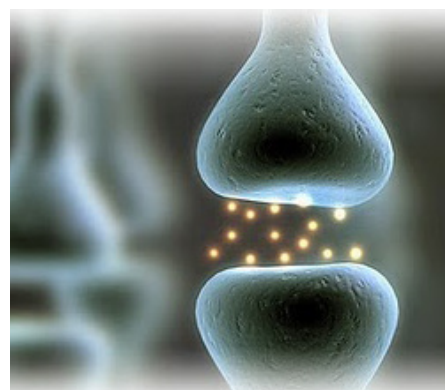
Simultaneously, taking advantage of the technological solutions available, the University of Consciousness will have an Online Virtual Campus in which to continue its activities beyond interaction via the physical presence of its members.



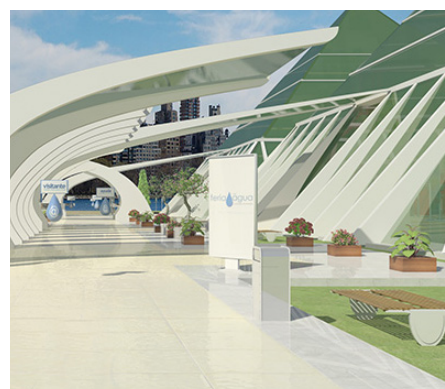
A space for research and tuition.



Integral growth.



Seeking to raise the level of consciousness.



A platform for human knowledge.

Philosophy of action



All the above is contemplated on the basis of the following principles:

- Promotion of employment in the region.
- Minimization of the visual impact.
- Completion of cycles of nutrients: treatment and reuse of water and compost and reuse of the organic matter generated.
- Use of constructive bioclimatic and sustainable systems and techniques which require the least possible energy.
- Use of sustainable materials, mainly autochthonous certified wood.
- Exploitation of renewable energy and of natural resources: sun, wind, water, etc.
- Study of the most efficient energy solutions.
- Electric energy network: an energy network is planned which connects all the buildings, making use of all the local energy resources, such as biomass, wind, mini-hydraulics, solar photovoltaic energy, cogeneration, etc.
- Thermal energy network: an energy network is planned which will make use of the heat of the sun, of cogeneration, etc.
- An all-embracing energy network which supplies all the needs of the complex, converting it into "a model of zero emissions".

A model of zero emissions.



Project for crops



The land intended for crops (vegetable gardens and fruit trees), will be the terraced land because its slope and quality of earth is better suited to agricultural production. This land will be used for the ecological production of fruit and vegetables.

The project contemplates planting and cultivating local varieties of agricultural species on the one hand and finding and recovering local seeds on the other. A land surface of approximately 5 ha is intended for this purpose.

In order to produce the least possible impact on the environment, the terraced land which has existed since time immemorial is to be respected. The only action taken will be to clear the land of its current vegetation and to create pathways which will allow access of the necessary machinery onto the different terraces. Reconstruction of the fallen slopes and the removal of large stones from the terraces will also be attended to.

Action on the remainder of the land will be minimal, thus respecting the existing vegetation in order to maintain and strengthen biodiversity, and retain a carpet of vegetation which will minimize erosion and favour the infiltration of rain water.

Cultivation of the estate will be effected by means of ecological agricultural methods and techniques such as the following among others:

- Fertilization with recycled organic matter (compost) closing the cycles of nutrients.
- No use of chemical products.
- Enhancing natural biodiversity and that of the crops.
- Association and rotation of species.

The project contemplates planting and cultivating local varieties of agricultural species on the one hand and finding and recovering local seeds on the other.





System for irrigation

Drip irrigation will be used to water the fruit trees and vegetables. This system allows taking maximum advantage of water as none is lost when distributed over the different slopes.

For water collection and storage, small naturalized ponds are envisaged. These will be adapted to the slopes and orography of the land along the area to be watered and will always respect the compulsory right of way.

The system of small ponds will allow their harmonious integration into the environment, avoiding the visual impact on the landscape which would be caused by a single pond with the same combined water capacity. The ponds will allow distribution of water to the crop areas.



The intelligent use of water at the service of all.

Facilities

1. Warehouse of 150 m² for agricultural machinery.
2. Warehouse of 200 m² for storage, cleaning, and conditioning of the fruit and vegetables and for the process of preparation of manufactured products.
3. Stables of 50 m² for horses and farm animals.
4. Greenhouse of 300 m².
5. 300 m² for maintenance workshop and general warehouse.

Optimal and sufficient infrastructures.



Management of the natural and cultural patrimony



Parallel to the aforesaid, a series of actions are envisaged in order to protect, recover and strengthen the natural surroundings of the area, such as:

- Creation of micro-reserves of autochthonous flora.
- Reforestation by using autochthonous species.
- Creation and protection of spaces which favour bird nesting, such as nest boxes for different species.
- Identification, observation and protection of wild autochthonous fauna.
- Recovery of ponds, wells, etc. as water points to enhance the recuperation of amphibious and other water species of interest.
- Consolidation and recovery of ruins.
- Recovery of local varieties of agricultural species.
- Autochthonous hen farming.
- Bee farming.
- Study and analysis of the possibility of integrating new species into the agricultural ecosystem.
- Creation of a farm school.

Above all, respecting and contributing to the growth of biodiversity of the area.



Natural and cultural patrimony.

Management of energy

All the different types of energy to be used in the project will be renewable:

- Solar: making use of both thermal and photovoltaic solar energy.
- Wind: taking advantage of energy produced by the wind by using small aerogenerators.
- Mini-hydraulic: making use of the slope of the land to achieve energy via the accumulation of water in the areas where the land is higher.
- Cogeneration: achieving electric and thermal energy via biogas or making use of the biomass to cover the needs of the estate.



The latest modern technology at the service of life.

Making use of
natural resources.



Comprehensive management of water



The whole process of water management and re-utilization is directed at making maximum use of this vital resource.

The main strategies for water management are:

- Making full use of rain water by collecting, storing and purifying it for drinking water.
- Collection and storage of superficial water in the surroundings, respecting the ecological sources.
- Reuse of waste water (grey and black) via:
 - Aerobiology systems.
 - Anaerobic biological purification systems.
 - Green filters.
- Reduction of consumption via:
 - Optimization of watering systems (drip).
 - Use of the most efficient bathroom fittings.
 - Use of highly effective atomizers and others.



Water. Making full use of a vital resource.

All the above is intended to provide a collection of samples of the different techniques in the field of treatment and reuse of waste water, which are operative in the facilities and may be shown to visitors.

The processes for purifying the water into drinking water will be ecological, via activated carbon filters, reverse osmosis or ultraviolet sterilizers.

These systems will ensure that the complex will at no time need to be connected to the general supply and evacuation networks, duly reinforcing the philosophy of operating as a self-sustainable complex.

Solid waste management

Solid waste management will be effected on the basis of the following parameters:
Reduce-reuse-recycle-recover.

Reduce the consumption of elements via efficient use, avoiding problematic elements such as plastic.

Reuse by prioritizing the use of products or elements which are time-resistant and can be reused (wood, glass, textile, etc.) as opposed to products and elements which are not long-lasting (plastic, disposable one-use products, etc.).

Recycle via composting of all the remnants of organic matter for their subsequent use as fertilizers, thus closing the cycle of nutrients.

Recover waste matter as a resource to be exploited, instead of simply as a problem to be eliminated.

The collection and selective classification of elements which are no longer in use will be effected, in order to hand them in to authorized waste management entities.



Bioclimatic buildings

Bioclimatic architecture adapts to the local climatic conditions of the place where the buildings are to be constructed. It makes use of local natural resources and applies energy techniques to secure a natural conditioning of temperature and humidity. It is based on traditional architecture and has been enhanced by techniques which meet the current energy needs of buildings, thus reducing the environmental impact. A building designed following bioclimatic criteria maintains an ideal temperature night and day throughout the different seasons of the year.

Bioclimatic architecture designs buildings from a global point of view: It juggles with location, natural light, movement of the sun, air currents, orography of the land, construction materials, etc. It uses architectural elements applying the aspects mentioned before to the distribution of space, the openings and direction of light and views, the controlled ventilation galleries, etc.

Passive solar energy collection systems must prevail in order to maximize energy savings.

Maximum efficiency of passive energy is achieved by applying the largest number of intervening factors such as:

- An ideal location.
- Reversed walls.
- Compact building.
- Adequate eaves north and south.
- Roofs made of dried vegetation.
- Orientation to the south.
- Controlled ventilation galleries.
- Insulation which will allow the house to breathe.
- Systems to capture natural light.
- Protection against the wind.
- Making full use of passive heat generating systems.
- Use of shutters and awnings.
- Evaporating systems for cooling.
- The materials used in bioclimatic architecture must be respectful of the surroundings, preserve the health of the people who use them, and of the people who dwell in the houses.



Vegetal façades for integration.



Bioclimatic housing.



Beauty in imitation of the surroundings.



The buildings will be planned following bioclimatic criteria which will allow:

- Making use of sun orientation.
- Thermal protection and integration into the landscape of buildings via vegetal elements on roofs and vertical parametres.
- Intelligent use of ecological insulation.
- Making use of the natural air currents.
- Enhancement of natural light inside the buildings.
- Limitation of energy loss in the building, by adequately orienting and designing the shape of the building and organizing its interior spaces.
- Optimization of solar light and thermal contributions via glass surfaces and by using passive systems to capture solar energy.

All these systems avoid the use of unnecessary energy and allow providing efficient energy solutions for the buildings to endow them with adequate climatic conditions to be able to conduct the activities foreseen for each building. The objective is that all the buildings, as a whole, be energetically independent from the general network.

The architectural solutions foreseen will make use of adequate materials which avoid long and costly transport, especially for the environment, and foment recycling and reuse. Construction materials will require little energy for their production and transformation. They will be materials which may be produced with the least cost to the environment, such as, for example, wood - certified to have been produced ecologically - or stones from the land itself.

For acoustic and thermal insulation, ecological products will be used, such as cork, wood, recycled cellulose, etc. Priority will be given to complete cycles of materials, thus promoting their reuse and recycling.

The fronts of the buildings will also be treated in such a way that they will appear to blend completely into the landscape. The stone from the land, the wood, the vegetal roofs and the façades will compile buildings which closely imitate their surroundings.

In the whole estate a minimum use of material and the maximum use of renewable energy will be fomented, which will result in less consumption of resources, both in construction and during their useful life span.



Half-buried buildings. Different techniques for a single objective.



Use of vegetal elements to improve insulation.





Constructions planned

A set number of constructions necessary for the project have been specified, with the definition of their characteristics needed to meet the project requirements.

Specific locations have also been defined on the map which could be subject to possible changes, with a view to better adapt them to the philosophy of the project and the orography of the land.

Different construction techniques are contemplated, as are the use of different materials and types of façades in order to enhance the complex - its effect as an example - and to render it more attractive.

NUMBER	CONSTRUCTION	FLOORS	m ² / FLOOR	m ² / TOTAL
1	Meditation Hall	1	700	700
2	Foundation Headquarters	2	312	624
3	Dining Hall	1	377	377
4	Auditorium	1	600	600
5	Library – Medical Centre	1	350	350
6	Staff Housing	2	500	1,000
7	Visitors Housing	2	644	1,288
8	Visitors Reception	1	100	100
9	<i>espaciophi</i> : facilities for companies	1	280	280
10	Warehouse for agricultural machinery	1	150	150
11	Warehouse for storage and workshop	1	300	300
12	Farm – Stables	1	50	50
Total surface			4,363	5,819

Also planned is the preparation of spaces to shelter other types of facilities such as:

NUMBER	CONSTRUCTIONS	FLOORS
1	Space and infrastructure for homes	1
2	Greenhouse	1



Land

involved and its characteristics

The project currently involves different plots of land located in the municipalities of Hoyos and Acebo in the province of Cáceres, Extremadura, in the west of Spain.

For ease of reference, a differentiation has been made in naming the plots in order to identify them. A distinction is therefore made between:

a) Main Land: This is the land consisting of different plots which are adjoined to each other. More specifically this land is known as Revolcobo and Las Siete Fuentes (The Seven Fountains).

b) Accessory Land: This is the combination of plots which make up the land not adjoined to the main land. More specifically, this land is known as Castañar.

Although the main elements which the project is made up of will be located on the Main Land, other activities are planned for the Main Land and the Accessory Land, which will promote its biodiversity and improve its environmental quality.

MUNICIPALITY	ZONE	PLOT	NAME	OWNER	SURFACE ha.
HOYOS	10	7	REVOLCOBO	PHI GAIA	4.368
ACEBO	11	179	REVOLCOBO	PHI GAIA	11.686
TOTAL REVOLCOBO					16.054
HOYOS	10	14	LAS 7 FUENTES	PHI FOUNDATION	4.860
HOYOS	10	8	REVOLCOBO	PHI FOUNDATION	0.112
HOYOS	10	16	LAS 7 FUENTES	PHI FOUNDATION	0.564
ACEBO	11	8	LAS 7 FUENTES	PHI FOUNDATION	0.517
ACEBO	11	9	LAS 7 FUENTES	PHI FOUNDATION	0.472
ACEBO	11	177	LAS 7 FUENTES	PHI FOUNDATION	1.093
ACEBO	11	10	LAS 7 FUENTES	PHI FOUNDATION	0.525
ACEBO	11	178	LAS 7 FUENTES	PHI FOUNDATION	7.138
TOTAL LAS SIETE FUENTES					15.281
TOTAL ADJOINING PLOTS					31.335
HOYOS	11	211	CASTAÑAR	PHI FOUNDATION	0.308
HOYOS	11	176	CASTAÑAR	PHI FOUNDATION	5.700
HOYOS	11	166	CASTAÑAR	PHI FOUNDATION	0.131
TOTAL CASTAÑAR					6.139
TOTAL PLOTS OWNED					37.474



Blueprints

- P01 Location Plan
- P02 General Plan of Main Land - Plots
- P03 General Plan of Accessory Land - Plots
- P04 Plan of detail of the Main Land - Constructions
- P05 Aerial Photograph of Main Land



CONTACT: Foundation Secretariat
Javier Ortiz Amuriza
Avda. Camp de Morvedre nº 7 - Bloque A - Pta. 7
CP 46530 Puçol, Valencia.
Cellular: + 34 609 639 510
Landline and Fax: + 34 961 406 350
secretaria@fundacionphi.org

If you wish to cooperate please do so through the web page www.fundacionphi.org or we can give you personal attention at:

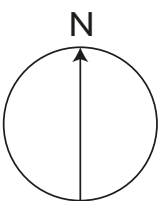
Begoña García Serrano
Tel: + 34 961 424 300
Fax: + 34 961 424 301
administracion@fundacionphi.org

www.fundacionphi.org



Municipality of Acebo

Municipality of Hoyos

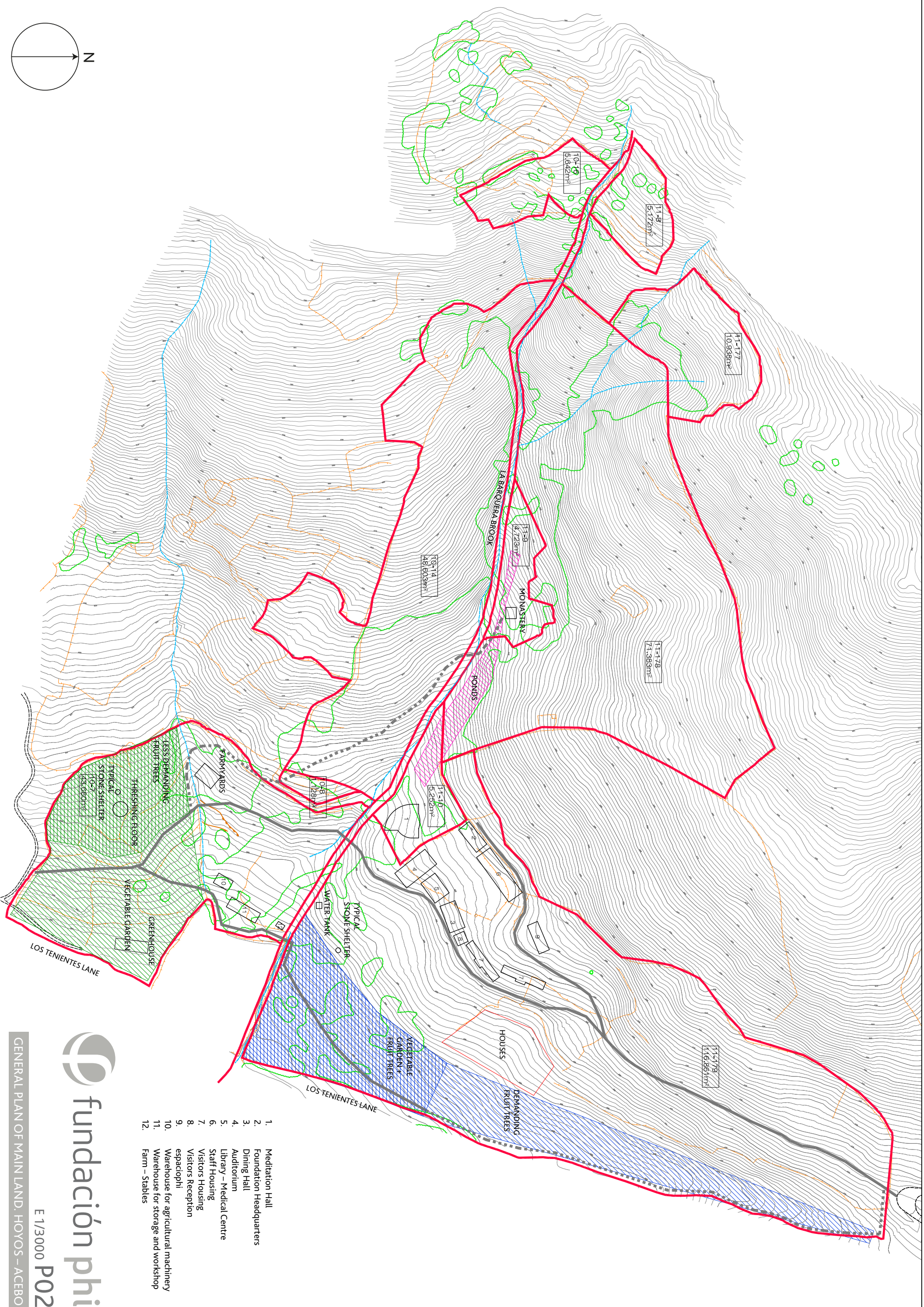


 fundación phi

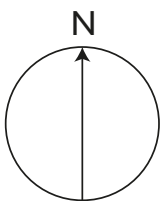
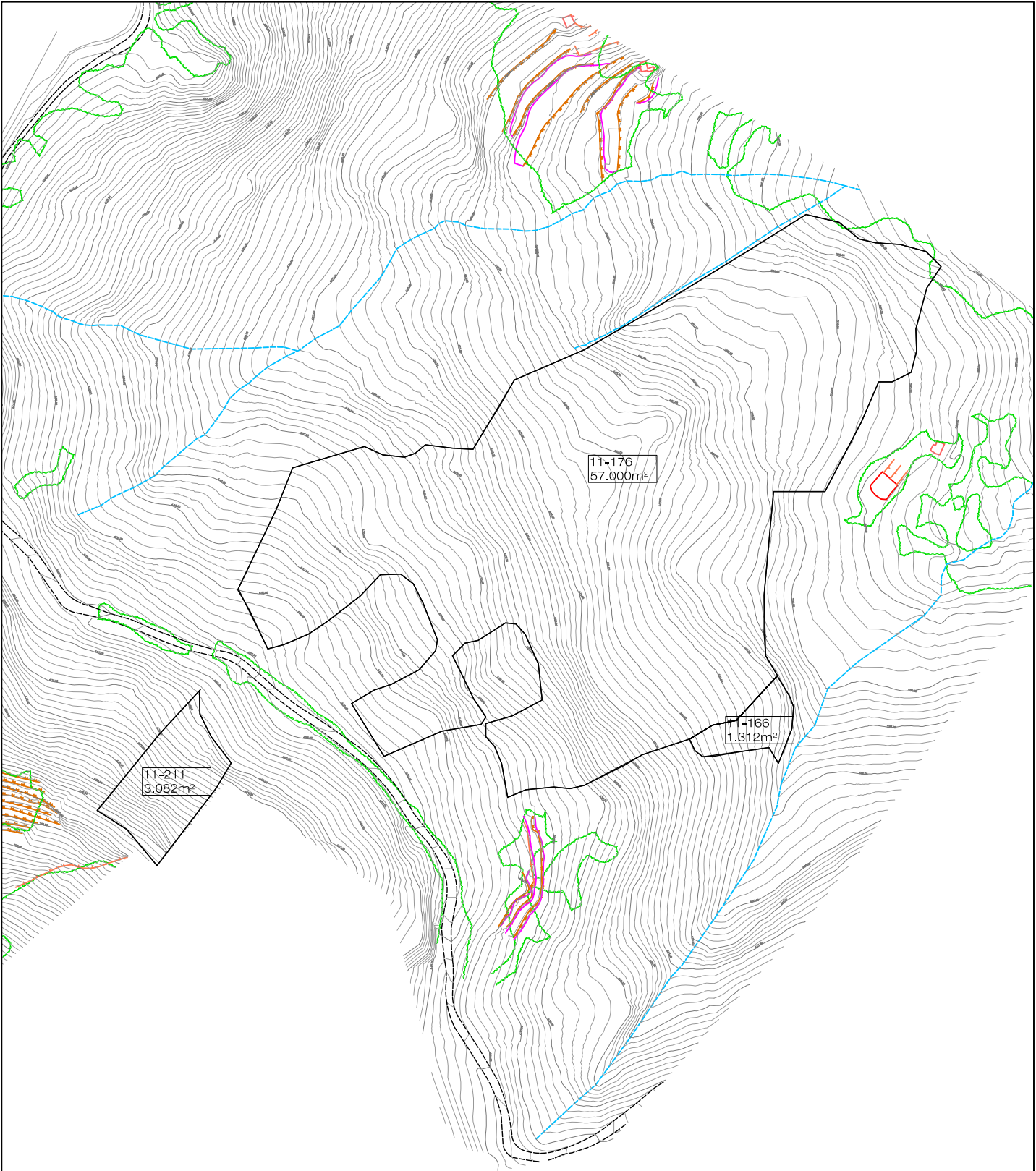
S/E

P01

LOCATION PLAN. MAIN LAND



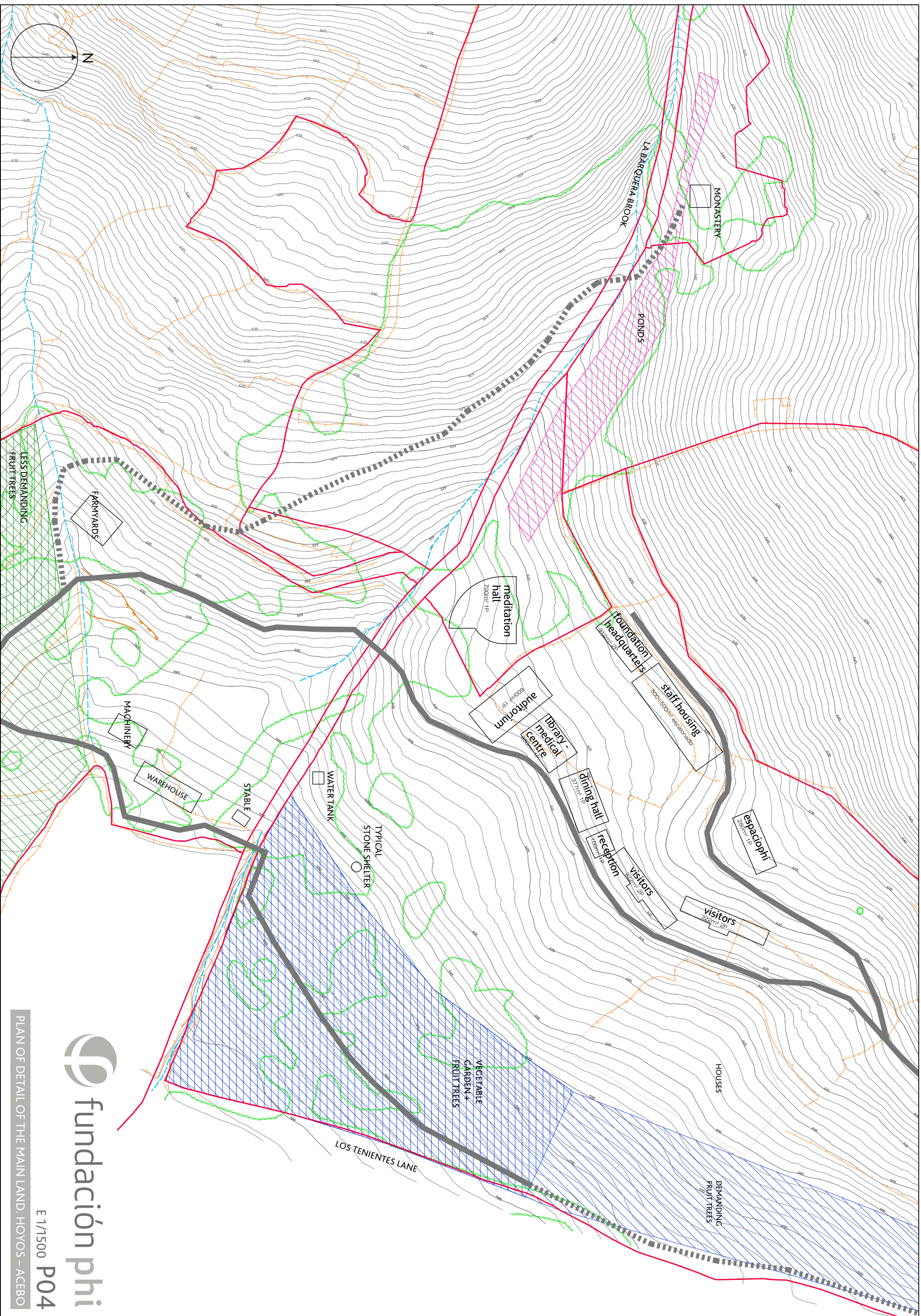
1. Meditation Hall
2. Foundation Headquarters
3. Dining Hall
4. Auditorium
5. Library – Medical Centre
6. Staff Housing
7. Visitors Housing
8. Visitors Reception
9. espadophi
10. Warehouse for agricultural machinery
11. Warehouse for storage and workshop
12. Farm – Stables

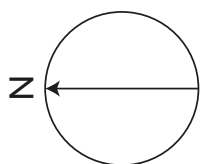


 fundación phi

E 1/3000 P03

GENERAL PLAN OF ACCESSORY LAND. HOYOS





 fundación phi

S/E P05

AERIAL PHOTOGRAPH OF MAIN LAND